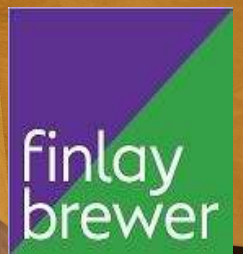




Aynhoe Road W14



Aynhoe Road W14

3 BEDROOMS

RECEPTION/KITCHEN/BREAKFAST ROOM

2 BATHROOMS (1 EN SUITE)

ROOF TERRACE

STORAGE

EPC RATING: D 60

COUNCIL TAX BAND: D

LEASE LENGTH: 992 YRS APX

SERVICE CHARGE: £420 PA APX

A well-presented 2/3 bedroom apartment situated over the second and third floors of an imposing Victorian end of terrace property with a wonderful westerly roof terrace. The full-width open plan reception/kitchen/breakfast room occupies the entire top floor and has windows to the front and back. There is a full-length glass door out to the west facing roof terrace which has far reaching views. The principal bedroom suite is situated to the rear of the second floor and has extensive storage and an ensuite bathroom. There are 2 further bedrooms and a bathroom. This well-configured property of approximately 945 sq ft is situated on one of Brook Green's prime residential streets and is moments away from the amazing new Olympia London with all its cultural and fine dining options.

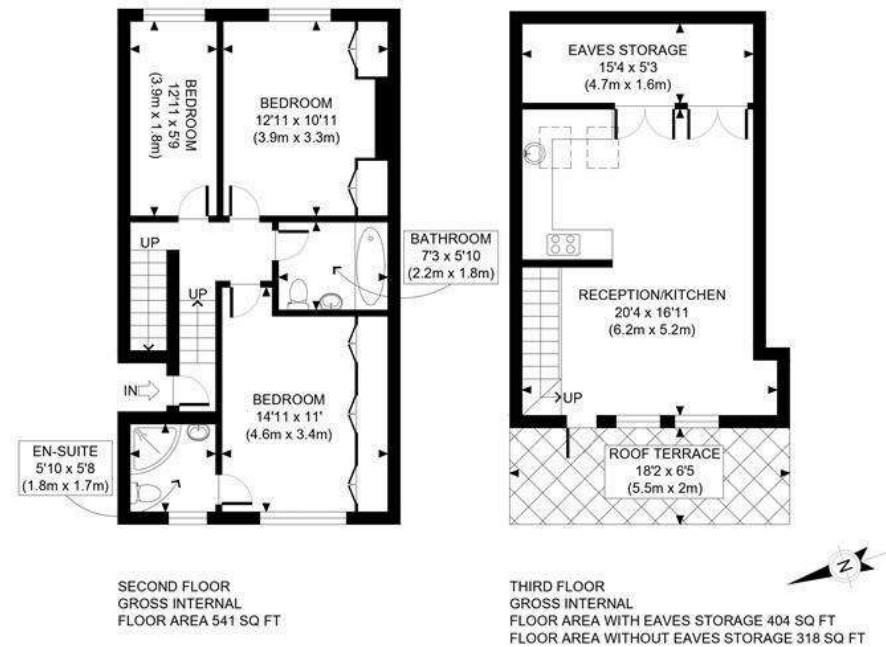
PRICE GUIDE £850,000
LEASEHOLD - SHARE OF FREEHOLD

SUBJECT TO CONTRACT









APPROX. GROSS INTERNAL FLOOR AREA WITH EAVES STORAGE: 945 SQ FT/ 88 SQM
APPROX. GROSS INTERNAL FLOOR AREA WITHOUT EAVES STORAGE: 859 SQ FT/ 80 SQM

PROPERTY PHOTO PLANS CO.UK
ONE STOP SHOP FOR PROPERTY MARKETING

This plan is for illustrative purposes only and should be used as such by any prospective client.